



Graphic Measures Guide

Contents

Fabric Solutions

Scene UltraLight	3
Scene Modular	3
Stage Impact	4
Stage TradeFair	4
Stage Hanging	5

PopUp Solutions

Network	6-9
Max	10

Banner Stands

Zap D1, D2 & D3	11
Solo 1 & 3	11

Counters & Podiums

LaunchPack	12
LaunchPack XL	12
CounterCase/CounterCase closed	12
CounterCase XL	12
All-in-one Case	12

Obsolete products

Original 8 / Demo 8	13
All-in-One Double Case	13

Scene UltraLight	Description	Size, width x height (mm)	Comment
Scene UltraLight	3000x2190 visible area	3000x2290	Size incl 50+50 mm for top and bottom seam

Scene Modular	Description	Size, width x height (mm)	Comment
Scene Modular	1000, 2000, 3000 750,1500, 2250, 2500 + any customized width*	1000/2000/3000x2190 750/1500/2250/2500x2190 Free x2190	Allow extra 50+50 mm for top and bottom seam
Scene Hanging	1000, 2000, 3000 750,1500, 2250, 2500 + any customized width*	1000/2000/3000xFree 750/1500/2250/2500xFree Free x Free	Allow extra 50+50 mm for top and bottom seam

Note: The Artwork will need 50 mm extra bleed all around, use the templates on our website <http://www.maxibit.com/templates/>

*Scene Modular can be cut to any length, either by yourself or by Maxibit for a small extra cost.

Stage

Each horizontal Stage pole is 110 cm long. If you make a 4 section Stage you make it 440 cm wide. The vertical poles are also 110 cm. There are two feet: the Oval foot and the Tripod foot.

The height of the Stage graphic should be 1 cm shorter than the length of the vertical poles that holds the graphic up. Therefore, a Stage that is two poles high (220 cm) should have a graphic that is 219 cm in height. 16 cm should then be added to the overall height of the graphic, 8 cm at the top and 8 cm at the bottom, such that a tubular seam can be sewn into which the horizontal poles will then be inserted. A table has been provided below:

A Stage 2 poles high should be 219 cm + 16 cm for the hem = 235 cm.

A Stage 3 poles high should be 329 cm + 16 cm for the hem = 345 cm.

A Stage 4 poles high should be 439 cm + 16 cm for the hem = 455 cm.

A Stage 5 poles high should be 549 cm + 16 cm for the hem = 565 cm.

And so on...

When hung from the ceiling, the stage fabric can be any length so long as you have the room to hang it! The fabric will still require an extra 8 cm on the top and 8 cm on the bottom (16 cm in total) for the hem.

Stage Impact	Description	Size, width x height (mm)	Comment
Stage 330x225 cm, curved or straight	3300x2190 visible area	3300x2350	Size incl 80+80 mm for top and bottom seam
Stage 440x225 cm, curved or straight	4400x2190 visible area	4400x2350	Size incl 80+80 mm for top and bottom seam
Stage 550x225 cm, curved or straight	5500x2190 visible area	5500x2350	Size incl 80+80 mm for top and bottom seam
Stage 660x225 cm, curved or straight	6600x2190 visible area	6600x2350	Size incl 80+80 mm for top and bottom seam
Stage 770x225 cm, curved or straight	7700x2190 visible area	7700x2350	Size incl 80+80 mm for top and bottom seam

Stage Trade Fair	Description	Size, width x height (mm)	Comment
Stage Trade Fair 4x2	5100x2190 visible area	5100x2350	Size incl 80+80 mm for top and bottom seam
Stage Trade Fair 5x2	6100x2190 visible area	6100x2350	Size incl 80+80 mm for top and bottom seam
Stage Trade Fair 6x2	7100x2190 visible area	7100x2350	Size incl 80+80 mm for top and bottom seam
Stage Trade Fair 7x2	8100x2190 visible area	8100x2350	Size incl 80+80 mm for top and bottom seam

Note: The Artwork will need 50 mm extra bleed all around, use the templates on our website <http://www.maxibit.com/templates/>

Stage Hanging Round	Description	Size, width x height (mm)	Comment
Stage Hanging Round 35-H01	13200xcustom height	13200xcustom height	Add 80+80 mm for top and bottom seam
Stage Hanging Round 35-H02	11000xcustom height	11000xcustom height	Add 80+80 mm for top and bottom seam
Stage Hanging S-shape 35-H03	4400xcustom height	4400xcustom height	Add 80+80 mm for top and bottom seam
Stage Hanging Straight 35-H04	4400xcustom height	4400xcustom height	Add 80+80 mm for top and bottom seam
Stage Hanging Round 35-H05	8800xcustom height	8800xcustom height	Add 80+80 mm for top and bottom seam
Stage Hanging Oval 35-H06	8800xcustom height	8800xcustom height	Add 80+80 mm for top and bottom seam
Stage Hanging Round 35-H07	4400xcustom height	4400xcustom height	Add 80+80 mm for top and bottom seam
Stage Hanging Round 35-H08	26400xcustom height	26400xcustom height	Add 80+80 mm for top and bottom seam

Note: The Artwork will need 50 mm extra bleed all around, use the templates on our website <http://www.maxibit.com/templates/>

Network	Description	Size, width (mm)	
Panel, straight		733	
Panel, concave		680	
Panel, convex		800	
Panel, end	180 degrees	660	
Panel, NW Square Edge, End	Flat	303	
Panel, aio podium new		1650x850	
Panel, aio podium old		1630x820	
Panel, double aio podium new	Covering two all-in-one boxes	2360x850	
Panel, double aio podium old	Covering two all-in-one boxes	2900x820	

Network	Description	Size, height (mm)	
1 section	x1	770	
2 sections	x2	1502	
3 sections	x3	2235	
4 sections	x4	2968	
5 sections	x5	3700	

Network, variations	Panel width (mm)	Image area (mm)	Comment
Straight 1x3, single sided	660/733/660	2053x2235	Incl. end panels
Straight 2x3, single sided	660/733/733/660	2786x2235	Incl. end panels
Straight 3x3, single sided	660/733/733/733/660	3519x2235	Incl. end panels
Straight 4x3, single sided	660/733/733/733/733/660	4252x2235	Incl. end panels

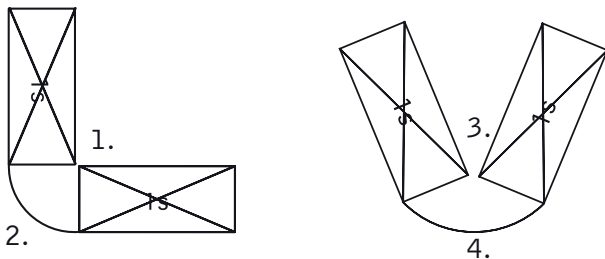
Note: The Artwork will need 5 mm extra bleed all around, use the templates on our website <http://www.maxibit.com/templates/>

Network, variations	Panel width (mm)	Image area (mm)	Comment
Straight 1x3, double sided	660/733/660/733	2786x2235	All around
Straight 2x3, double sided	660/733/733/660/733/733	4252x2235	All around
Straight 3x3, double sided	660/733/733/733/660/733/733/733	5718x2235	All around
Straight 4x3, double sided	660/733/733/733/733/660/733/733/733/733	7184x2235	All around
Straight 1x4, single sided	660/733/660	2053x2968	Incl. end panels
Straight 2x4, single sided	660/733/733/660	2786x2968	Incl. end panels
Straight 3x4, single sided	660/733/733/733/660	3519x2968	Incl. end panels
Straight 4x4, single sided	660/733/733/733/733/660	4252x2968	Incl. end panels
Concave 1x3, single sided	660/680/660	2000x2235	Incl. end panels
Concave 1x3, double sided	660/680/660/800	2800x2235	All around
Concave 2x3, single sided	660/680/680/660	2680x2235	Incl. end panels
Concave 3x3, single sided	660/680/680/680/660	3360x2235	Incl. end panels
Concave 4x3, single sided	660/680/680/680/680/660	4040x2235	Incl. end panels
Concave 1x4, single sided	660/680/660	2000x2968	Incl. end panels
Concave 1x4, double sided	660/680/660/800	2800x2968	All around
Concave 2x4, single sided	660/680/680/660	2680x2968	Incl. end panels
Concave 3x4, single sided	660/680/680/680/660	3360x2968	Incl. end panels
Concave 4x4, single sided	660/680/680/680/680/660	4040x2968	Incl. end panels

Note: The Artwork will need 5 mm extra bleed all around, use the templates on our website <http://www.maxibit.com/templates/>

Network, variations	Panel width (mm)	Image area (mm)	Comment
Convex 1x3, single sided	660/800/660	2120x2235	Incl. end panels
Convex 1x3, double sided	660/800/660/680	2800x2235	Incl. end panels
Convex 2x3, single sided	660/800/800/660	2920x2235	Incl. end panels
Convex 3x3, single sided	660/800/800/800/660	3720x2235	Incl. end panels
Convex 4x3, single sided	660/800/800/800/800/660	4520x2235	Incl. end panels
Convex 1x4, single sided	660/800/660	2120x2968	Incl. end panels
Convex 1x4, double sided	660/800/660/680	2800x2968	Incl. end panels
Convex 2x4, single sided	660/800/800/660	2920x2968	Incl. end panels
Convex 3x4, single sided	660/800/800/800/660	3720x2968	Incl. end panels
Convex 4x4, single sided	660/800/800/800/800/660	4520x2968	Incl. end panels

Network, special measures		Width (mm)	Comment
1. Connecting panel, 90 degrees	With hinged magnetic rail (6204)	Add 7 mm to adjacent panel	Inner corner
2. Connecting panel, 90 degrees		550	Outer corner
3. Connecting panel, 45 degrees	With hinged magnetic rail (6204)	Add 7 mm to adjacent panel	Inner corner
4. Connecting panel, 45 degrees		680	Outer corner
Connecting panel	2 concave NW facing each other	900	



Note: The Artwork will need 5 mm extra bleed all around, use the templates on our website <http://www.maxibit.com/templates/>

Various graphic measures for Network Frost (Showcase)

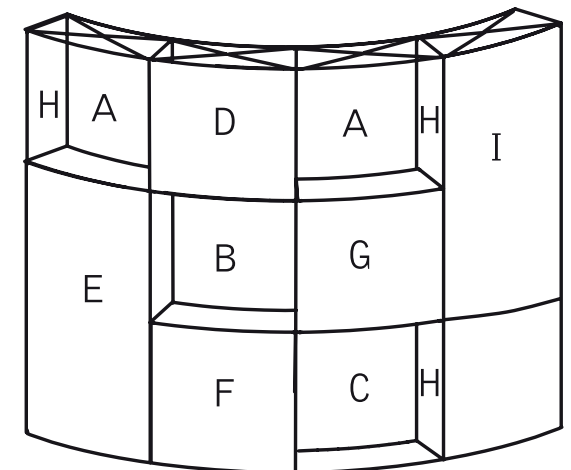
All measures in millimetre.

Panel	Convex	Concave	Straight*	Manufacturing instructions
A	680x754	800x754	733x754	Mounting kits at top and bottom (holes for panel clips at top) mounted at the back side. Magnetic tape (6240) on the image side, 754 mm.
B	680x754	800x754	733x754	Mounting kits at top and bottom (NO holes for panel clips) mounted at the back side. Magnetic tape (6240) on the image side, 754 mm.
C	680x754	800x754	733x754	Like B. Mounting kits at top and bottom, no holes, mounted at the back side. Magnetic tape (6240) on the image side, 754 mm.
D	800x754	680x754	733x754	Mounting kits at top and bottom (as usual)
E	800x1502	680x1502	733x1502	Mounting kits at top and bottom, no holes for panel clips
F	800x769	680x769	733x769	Mounting kits at top and bottom, no holes for panel clips
G	800x754	680x754	733x754	Mounting kits at top and bottom, no holes for panel clips
H	303x733	303x733	303x733	Cut out for Network pipe: at top=to the left, at bottom=to the right
I	800x1487	680x1487	733x1487	Mounting kits at top and bottom (as usual)

*Mounting kit for straight panels (6284) mounted at the top onto graphics with panel clips, at the bottom onto graphics that are adjacent to the floor.

Necessary magnetic rails:

- 6256 Magnetic rail 2-way (used at the sides and by the openings in the structure)
- 6257 Magnetic rail 3-way (may be used everywhere at the back side of the structure)
- 6257-00 Magnetic rail 3-way without centre magnetic tape (used at one of the sides of an opening that is adjacent to the end of the structure).
- 6251 May be replaced by 6257. Otherwise used, for instance, between panel E and F, the bottom scissor at drawing below.



Note: The Artwork will need 5 mm extra bleed all around, use the templates on our website <http://www.maxibit.com/templates/>

Max	Description	Size, width (mm)	Size, height (mm)
Panel, straight		755	2302
Panel, concave		715	2302
Panel, convex		802	2302

Max, variations	Panel width (mm)	Image area (mm)	Comment
Straight 3x3, single sided	715/755/755/755/715	3695x2302	Incl. end panels
Straight 4x3, single sided	715/755/755/755/755/715	4450x2302	Incl. end panels
Straight 3x3, double sided	715/755/755/755/715/755/755/755	5960x2302	Incl. end panels
Straight 4x3, double sided	715/755/755/755/755/715/755/755/755/755	7470x2302	Incl. end panels
Curved 3x3, single sided (concave)	715/715/715/715/715	3575x2302	Incl. end panels
Curved 4x3, single sided (concave)	715/715/715/715/715/715	4290x2302	Incl. end panels
Curved 3x3, double sided (concave)	715/715/715/715/715/802/802/802	5981x2302	Incl. end panels
Curved 4x3, double sided (concave)	715/715/715/715/715/715/802/802/802/802	7498x2302	Incl. end panels

Note: The Artwork will need 5 mm extra bleed all around, use the templates on our website <http://www.maxibit.com/templates/>

Zap	Description	Size, width x height (mm)	
Zap D1, 850	With Gripper profile	850x2400	Of which 190 mm in cassette
Zap D2/D3, 850	With Gripper profile	850x2400	Of which 190 mm in cassette
Zap D3, 1000	With Gripper profile	1000x2400	Of which 190 mm in cassette
Zap D2/D3, 1200	With Gripper profile	1200x2400	Of which 190 mm in cassette

Solo	Description	Size, width x height (mm)	
Solo 1	With Gripper profile and magnets	850/610x2235	
Solo 3	With Gripper profile and magnets	850/610x1000-2190	

*Note: The Artwork will need 5 mm extra bleed all around, use the templates on our website <http://www.maxibit.com/templates/>
Zap and Solo come with telescopic poles, allowing for adjustable heights. Solo 3 also has adjustable distance to floor, using pole slider.*

LaunchPack	Description	Size, width x height (mm)	Comment
Panel, desk 2.0.1	System with black hubs	1937x950	Recommendation: Double-sided laminated paper (hot) final thickness 0,6 mm
Panel, desk 2.0	System with white hubs	1937x983	Recommendation: Double-sided laminated paper (hot) final thickness 0,6 mm

LaunchPack XL	Description	Size, width x height (mm)	Comment
Panel, desk 2.0.1	System with black hubs	3505x950	Recommendation: Double-sided laminated paper (hot) final thickness 0,6 mm

CounterCase	Description	Size, width x height (mm)	Comment
Panel, desk		1720x850	Recommendation: Double-sided laminated paper (hot) final thickness 0,6 mm

CounterCase closed	Description	Size, width x height (mm)	Comment
Panel, desk		1860x835	Recommendation: Double-sided laminated paper (hot) final thickness 0,6 mm

CounterCase XL	Description	Size, width x height (mm)	Comment
Panel, desk		3270x850	Recommendation: Double-sided laminated paper (hot) final thickness 0,6 mm

All-in-One Case	Description	Size, width x height (mm)	Comment
Panel, desk	New	1650x850	
Panel, desk	Old	1630x820	

Note: The Artwork will need 5 mm extra bleed all around, use the templates on our website <http://www.maxibit.com/templates/>

Original 8 / Demo 8	Description	Size, width x height (mm)	Comment
Per piece		700x1000	
Per piece, top sign		700x300	
Complete	Excl. top signs	2800x2000	
Complete	Incl. top signs	2800x2300	

All-in-One Double Case	Description	Size, width x height (mm)	Comment
Panel, new	Covering two all-in-one boxes	2360x850	
Panel, old	Covering two all-in-one boxes	2900x820	

Note: The Artwork will need 5 mm extra bleed all around, use the templates on our website <http://www.maxibit.com/templates/>

Maxibit/Screenbolaget AB

Visit: Elektravägen 18
P.O Box 42212, 126 17 Stockholm, Sweden
Phone: +46 8 781 04 50
E-mail: info@maxibit.com
www.maxibit.com

